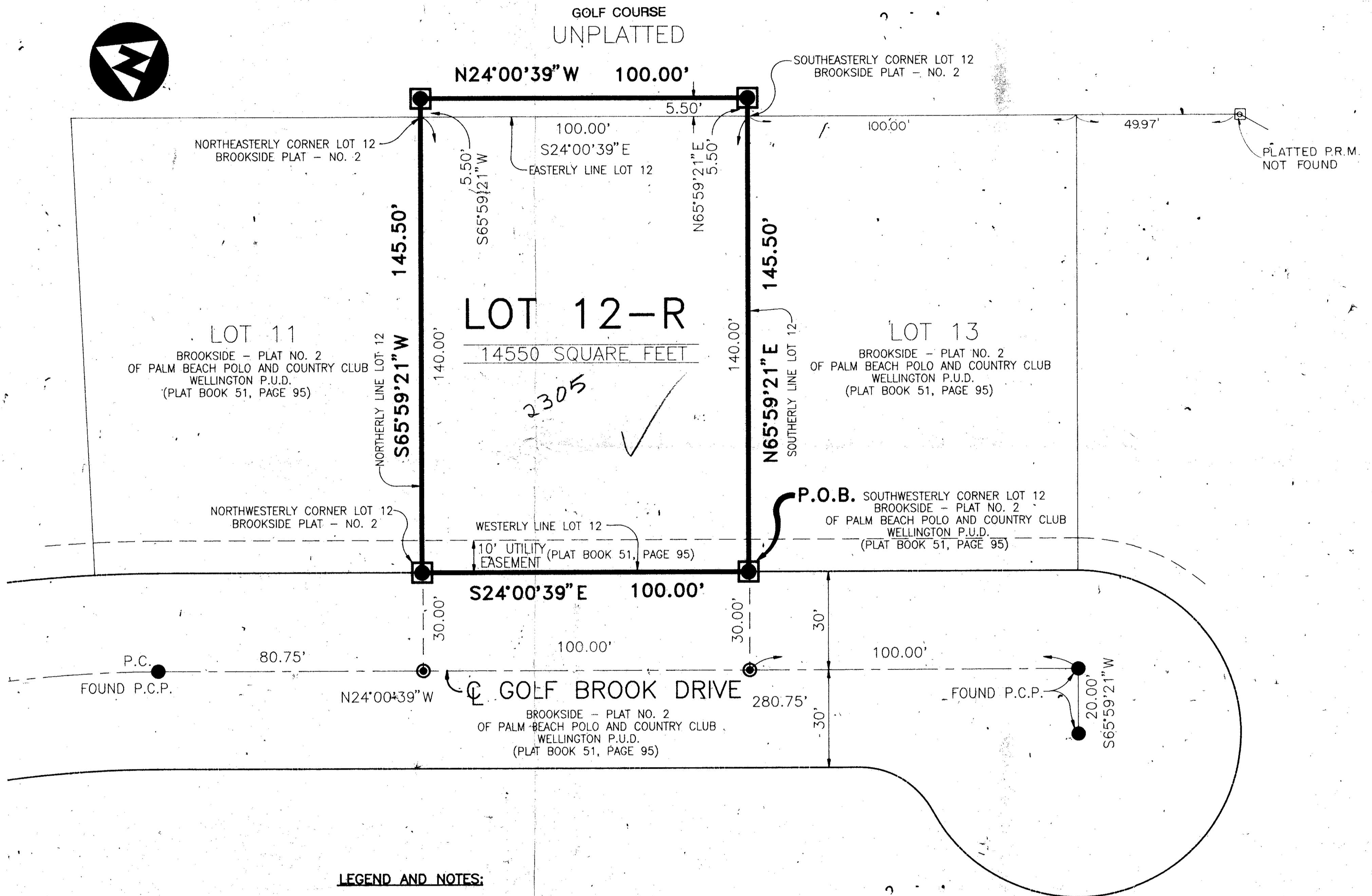
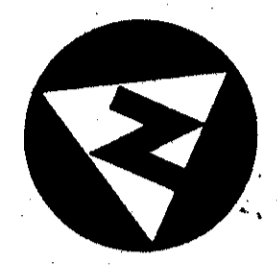
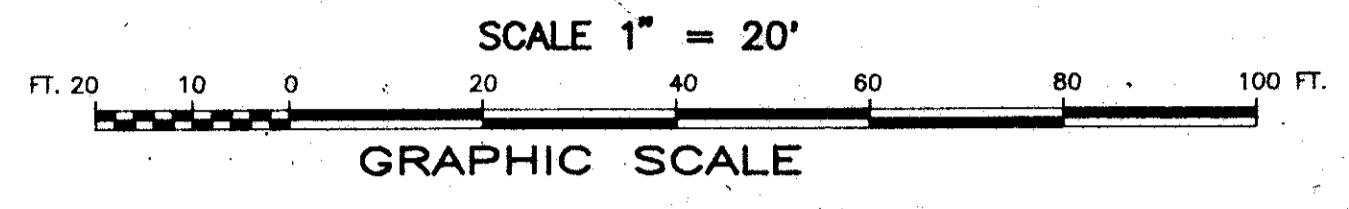


LUBELL'S SUBDIVISION

BEING A REPLAT OF LOT 12, BROOKSIDE - PLAT NO. 2, OF PALM BEACH POLO AND COUNTRY CLUB, WELLINGTON P.U.D., PLAT BOOK 51, PAGE 95, AS RECORDED IN THE PUBLIC RECORDS, PALM BEACH COUNTY, FLORIDA
TOGETHER WITH A PART OF SECTION 14, TOWNSHIP 44 SOUTH, RANGE 41 EAST
ALL LYING IN SECTION 14, TOWNSHIP 44 SOUTH, RANGE 41 EAST, PALM BEACH COUNTY, FLORIDA
SEPTEMBER 1992 SHEET 2 OF 2



- LEGEND AND NOTES:**
- = SET PERMANENT REFERENCE MONUMENT (P.R.M.) #2424
 - = SET PERMANENT CONTROL POINT (P.C.P.) #2424
 - = FOUND PERMANENT CONTROL POINT (P.C.P.) #2297
 - P.C. = POINT OF CURVATURE

TRZ = 730

Pet. 86-32

0332-102
69/165

SUBDIVISION * LUBELL'S SUBDIVISION
 BOOK 69 PAGE 165
 FLOOD ZONE A-1 FLOOD MAP # 1008
 QUAD # 62 ZONING AR
 SE ZIP CODE 33414
 PUD NAME PALM BEACH POLO & CC

BENCH MARK
 Land Surveying and Mapping, Inc.
 4152 West Blue Heron Blvd, Suite 121, Riviera Beach, FL 33404
 Fax (407) 844-8552 Phone (407) 848-2102

RECORD PLAT
LUBELL'S SUBDIVISION

DWN	DIC	FILE	SCALE	SHEET
CKD		FILE W920132.DWG	SCALE 1"=20'	SHEET 2 OF 2

14/44/41